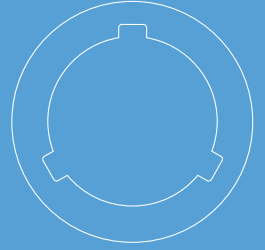




CAMLOG[®]
SYSTEM



CONELOG[®]
SYSTEM



CAMLOG[®] AND CONELOG[®] IMPLANT ANALOGS AND BAR IMPLANT ANALOGS

for printed and cast models



a perfect fit[™]

camlog

WITH THE NEW IMPLANT ANALOGS AND BAR IMPLANT ANALOGS, CAMLOG CLOSSES THE GAP IN THE DIGITAL WORKFLOW

The new implant analogs and bar implant analogs for CAMLOG® and CONELOG® are designed for use in printed plastic models.

With the aid of additional design modules in the CAD software, intraoral scan data can be transferred to a printed model. The slot geometry of the implant analogs and the bar implant analogs are stored in CAD libraries and are accessible from www.camlog.com.

ALL ADVANTAGES AT A GLANCE:

- high precision, position-stable analogs
- low component height – reduced print time and material usage
- one-piece analogs with locking function – simple and safe use
- CAD libraries for 3Shape, exocad and Dental Wings with slot geometries optimally matched to the analogs
- screwable handle for inserting the implant analogs into the printed model
- all analogs are also suitable for cast models
- analogs for the CAMLOG® and CONELOG® Implant system



CAMLOG® IMPLANT ANALOG, titanium alloy

ART. NO. K3025.3300 K3025.3800 K3025.4300



FOR IMPLANT Ø 3.3 mm 3.8 mm 4.3 mm

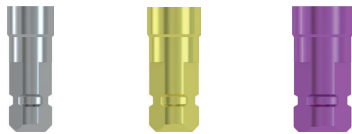
K3025.5000 K3025.6000



5.0 mm 6.0 mm

CONELOG® IMPLANT ANALOG, titanium alloy

ART. NO. C3025.3300 C3025.3800 C3025.4300



FOR IMPLANT Ø 3.3 mm 3.8 mm 4.3 mm

C3025.5000



5.0 mm

HANDLE FOR CAMLOG®/CONELOG® IMPLANT ANALOG,

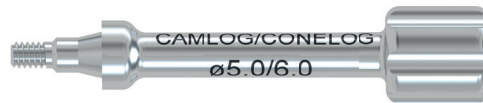
Screwable, for pressing in the CAMLOG®/CONELOG® Implant analogs into the printed model, stainless steel

ART. NO. J3025.0010



FOR IMPLANT Ø 3.3/3.8/4.3 mm

J3025.0015



5.0/6.0 mm



BAR IMPLANT ANALOG FOR CAMLOG® AND CONELOG® BAR ABUTMENTS, stainless steel

ART. NO. J3025.4300



FOR IMPLANT Ø 3.3/3.8/4.3 mm

J3025.6000



5.0 mm

DRIVER FOR STRAIGHT BAR ABUTMENTS,

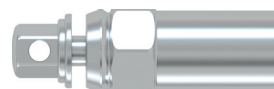
Screwable, for pressing in the bar implant analogs into the printed model, stainless steel

ART. NO. J5300.0021



FOR IMPLANT Ø 3.3/3.8/4.3 mm

J5300.0025



5.0 mm



Not all CAMLOG products are available in all countries.

HEADQUARTERS

CAMLOG Biotechnologies GmbH | Margarethenstr. 38 | 4053 Basel | Switzerland
Phone +41 61 565 41 00 | Fax +41 61 565 41 01 | info@camlog.com | www.camlog.com

Manufacturer CAMLOG® and CONELOG® Products: ALTATEC GmbH | Maybachstr. 5 | 71299 Wimsheim | Germany

camlog